

NT31 - Surface Mounted Steel Weighbridge



Surface mounted steel weighbridge; an optimum weighing solution for demanding needs. A durable, rigid design, with an impressive life span.

Strength & Durability - Design specifications and high quality materials make the NT31 a reliable weighing solution for demanding applications with frequent use and high levels of concentrated loads.

Versatile - Constructed in standard sizes (Length: 6 to 18m and Width: 3m) it can be also manufactured in different sizes and be accompanied with various options according to your special needs.

Modular - The modules (drive sections) are connected across with connective beams for an easier transportation and assembly on the weighbridge site.

Easy Service & Maintenance - Practical access to load cells and junction box through the removable covers on the top of the platform.

International Approvals - All our products are OIML & EU-type approved.

Finite Element Analysis - Our structural design team incorporates the latest of Finite Element Analysis (FEA) technology. The optimum and robust weighbridge design achieved, ensures high durability and accurate functionality during operation.

Applications - Perfectly befitting sites with heavy traffic, ports and terminals, cement plants and other industries, recycling sites and a plentitude of other applications.

Additional/Optional Features

- Concrete foundation to be casted on site, according to Leon Engineering drawings.
- Pre-fabricated concrete foundations and ramps available (LL foundations and foundation stripes).
- Galvanized version.
- Heavy duty version (DIN1072).
- Steel side rails.

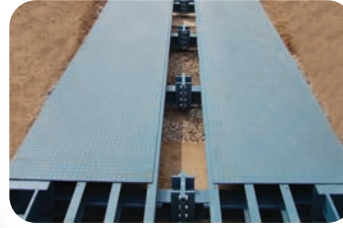


NT31 - Surface Mounted Steel Weighbridge



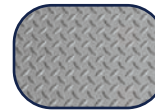
Transportable Modules

The modules can be unloaded and carried with a 5T forklift without the need of cranes and other heavy equipment and then placed on the surface on which the weighbridge will be installed.



Practical Installation

The installation can be easily performed, since the drive modules of the weighbridge can be assembled and bolted together with common tools.



Anti-slip chequer top plate, painted blue

| Model | L (m) | W (m) | Type | Profile (mm) | No of Load cells | Deck Plate Thickness (mm) | Loading Capacity (Tn/Axle) | Indicative Capacity (Tn) |
|--------------|-------|-------|---------|--------------|------------------|---------------------------|----------------------------|--------------------------|
| NT31 IPE 360 | 6 | 3 | pitless | 420 | 4 | 6 | 10 | 30 |
| NT31 IPE 270 | 9 | 3 | pitless | 330 | 6 | 6 | 15 | 40 |
| NT31 IPE 360 | 12 | 3 | pitless | 420 | 6 | 6 | 10 | 40 |
| NT31 IPE 270 | 14 | 3 | pitless | 330 | 8 | 6 | 15 | 50 |
| NT31 IPE 360 | 15 | 3 | pitless | 420 | 8 | 6 | 13 | 50 |
| NT31 IPE 360 | 16 | 3 | pitless | 420 | 8 | 6 | 12 | 60 |
| NT31 IPE 360 | 18 | 3 | pitless | 420 | 8 | 6 | 10 | 60 |
| NT31 IPE 360 | 18 | 3 | pitless | 420 | 8 | 8 | 12 | 70 |
| NT31 IPE 270 | 18 | 3 | pitless | 330 | 10 | 6 | 15 | 80 |
| NT31 IPE 270 | 18 | 3 | pitless | 330 | 10 | 8 | 16 | 90 |
| NT31 IPE 360 | 18 | 3 | pitless | 420 | 10 | 10 | 20 | >100 |

Optional Equipment

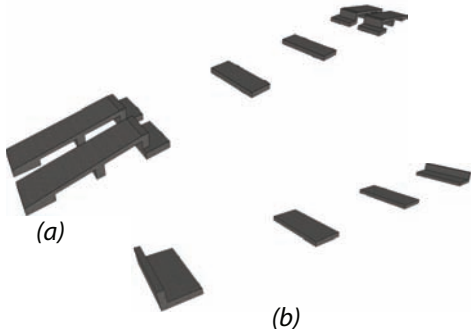
Prefabricated Foundation With Optional Ramps

Factory pre-fabricated LL foundations with stripes (a) with or (b) without ramps, are an optional feature of NT31 pitless weighbridge. The installation time is remarkably lessened.



Steel Side Rails

The optional steel rails are bolted on each of the sides of the drive modules and benefit the weighbridge by preventing the accidents and thus minimizing the risk of driving off the deck.



Weighing Indicators

Leon Engineering offers a wide range of digital indicators that are easy to operate and can be used in a variety of applications, from simple weighing to complex data manipulation.



Analogue or Digital Load cells

Leon Engineering markets OIML & NTEP approved load cells that ensure reliability and accurate weighing, either in analogue or digital weighbridge configurations.



© Leon Engineering SA 2013. All rights reserved.

This publication is issued by Leon Engineering to provide information regarding its products. Leon Engineering reserves the right to alter without notice the specifications and design of any of its products at any time.

Leon Engineering SA

Tsoka 8 - Thesi Xiropigado Mandra Attikis
19600, Greece

Tel: +30 210 7770936, Fax: +30 210 7758925