

CP3000 SC - EASY Surface Mounted Composite Weighbridge



Surface composite weighbridge, an economic solution with great performance. The ultimate exportable weighbridge.

Structural Integrity - The weighbridge is composed of a steel formwork, seamed together with a bottom corrugated galvanized steel plate, quality steel reinforcements and foundation plates with movement restrainers.

Modular Design - The main steel frame together with the reinforcing is delivered in parts easily bolted and assembled together on site; for example the 18x3m model, it is composed of 6 pcs of approximate dimensions 6x1,6m, so when bolted together they compose a structure of 18x3m. This process reduces on-site large crane requirements (a fork lift is also enough) and also reduces transportation cost.

Quick Installation - The concrete can be poured on site even with the deck already assembled and installed at final position. No need for extra forming works and no need to place the deck on the floor and lift it once the concrete is dry, as it was used to be until now. In most cases the installation works are ended within one day.

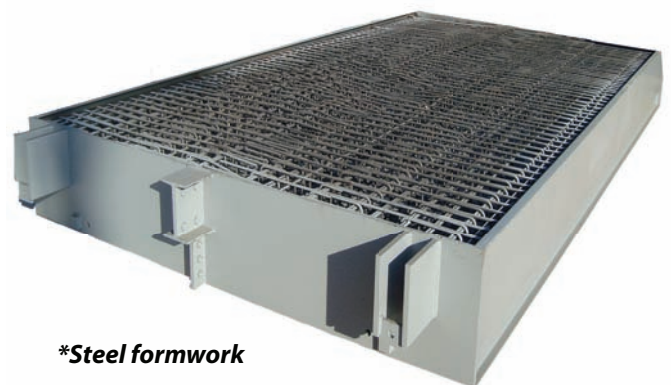
Versatile - Constructed in standard sizes (Length: 6 to 25m and Width: 3m) it can be also manufactured in different dimensions according to your special needs.

Easy Service & Maintenance - Practical access to load cells and junction box through the removable covers on the top.

Finite Element Analysis - Our structural design team incorporates the latest of Finite Element Analysis (FEA) technology. The optimum and robust weighbridge design achieved, ensures high durability and accurate functionality during operation.

International Approvals - All our products are OIML & EU-type approved.

Applications - Perfectly befitting applications with heavy traffic.



***Steel formwork**

Additional/Optional Features

- Galvanized version of the steel formwork.
- Heavy duty version (DIN1072).
- Version with a 3,5m width.

CP3000 SC - EASY Surface Mounted Composite Weighbridge



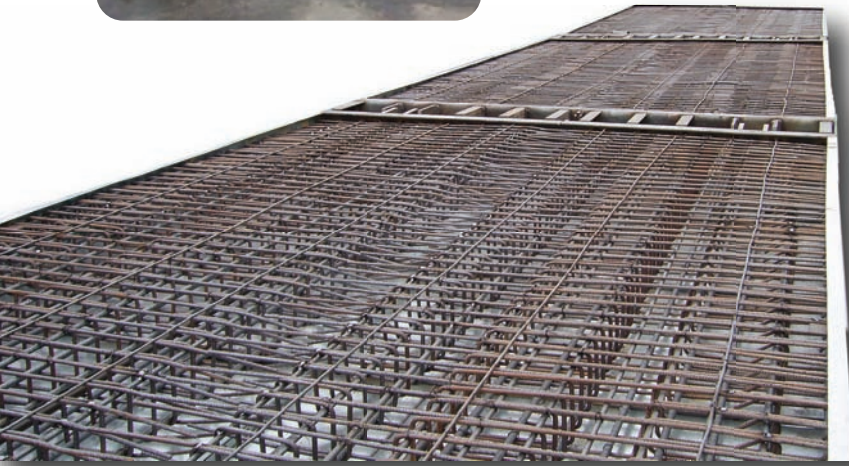
Quick installation

The main steel frame together with the reinforcing is delivered in parts easily bolted and assembled on site. During installation, the modules of the frame are assembled together to a single module.



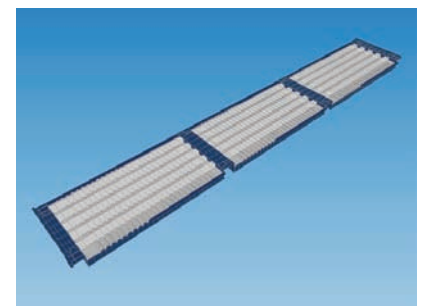
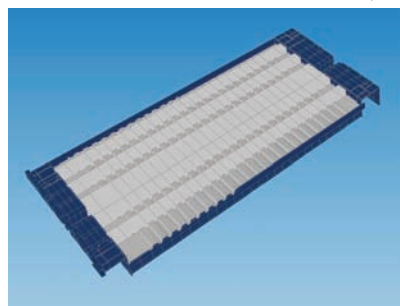
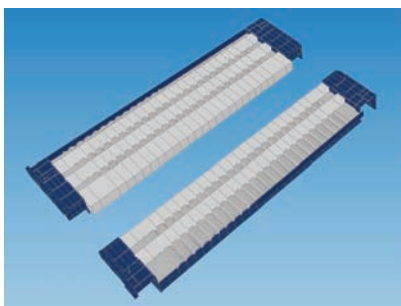
Concrete to be poured on site

The concrete is poured on site with the load cells already installed. Normal concrete curing time applies.



View of the steel formwork's bottom (standard galvanized).

Model	L (m)	W (m)	Type	Profile (mm)	No of Load cells	Loading Capacity (Tn/Axle)	Indicative Capacity (Tn)	Concrete Volume (m ³)
CP 3000-SC Easy	6	3	pitless	390	4	10	30	3,5
CP 3000-SC Easy	9	3	pitless	390	6	15	40	5,5
CP 3000-SC Easy	12	3	pitless	390	6	10	40	8
CP 3000-SC Easy	14	3	pitless	390	8	16	50	9,5
CP 3000-SC Easy	15	3	pitless	390	8	15	60	10,3
CP 3000-SC Easy	16	3	pitless	390	8	12	60	11
CP 3000-SC Easy	18	3	pitless	390	8	10	80	12,5
CP 3000-SC Easy	18	3	pitless	390	10	20	100	13



Optional Equipment

Weighing Indicators

Leon Engineering offers a wide range of digital indicators that are easy to operate and can be used in a variety of applications, from simple weighing to complex data manipulation.



Analogue or Digital Load cells

Leon Engineering markets OIML & NTEP approved load cells that ensure reliability and accurate weighing, either in analogue or digital weigh-bridge configurations.



© Leon Engineering SA 2013. All rights reserved.

This publication is issued by Leon Engineering to provide information regarding its products. Leon Engineering reserves the right to alter without notice the specifications and design of any of its products at any time.

Leon Engineering SA

Tsoka 8 - Thesi Xiropigado Mandra Attikis
19600, Greece

Tel: +30 210 7770936, Fax: +30 210 7758925